

COMPANY

Corstorphine + Wright

LOCATION

United Kingdom

SOFTWARE

Autodesk® BIM 360™ Design
Autodesk® Revit®

Improved collaboration across UK offices and teams sees Corstorphine + Wright boost productivity levels

Autodesk BIM 360 Design helps leading architecture practice boost productivity by 25%

“Using Autodesk BIM 360 Design to collaborate with teams anywhere we are seeing **productivity increases of up to 25%** on cloud-based BIM projects.”

— **Anthony Woodsford**
Associate/BIM Manager
Corstorphine + Wright

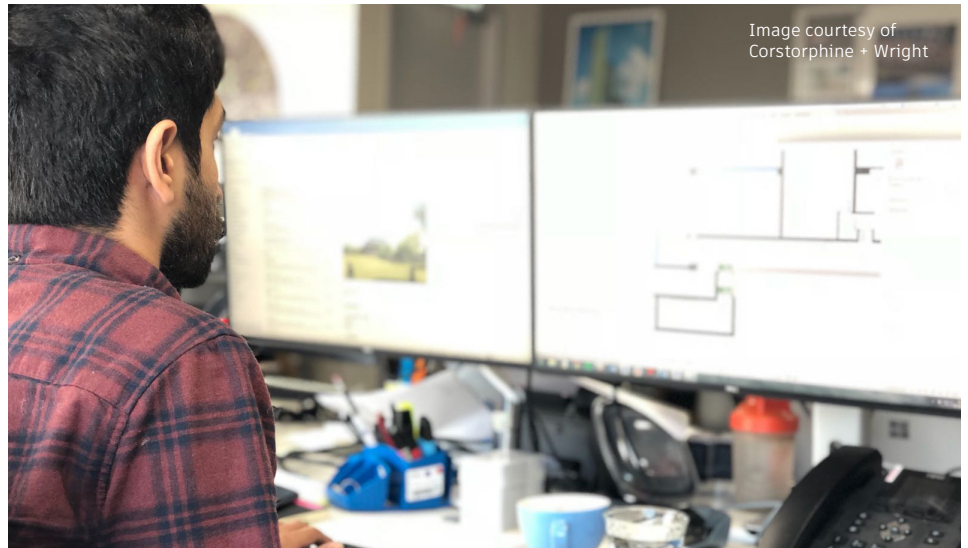


Image courtesy of
Corstorphine + Wright

Using BIM360 Design, staff collaborate around the country seamlessly

Award-winning national Architectural Practice, Corstorphine + Wright has been combining innovative, high quality architectural design solutions for over 40 years. Since its founding in 1978, the Practice has grown to over 140 employees based in 8 offices across the UK including London, Birmingham, Manchester, Warwick, Stourbridge, Glasgow, Canterbury and Leeds. Corstorphine + Wright is known for integrating the latest technological advances, including 3D-based Building Information Modelling (BIM) into its design processes to deliver innovative building solutions. However, with a growing team, the Practice was keen to investigate how to further foster collaboration and promote effective working across the different offices.

Designers slowed by IT infrastructure

With an increasing network of offices, Corstorphine + Wright was keen to ensure it could continue to work efficiently and effectively and coordinate internal teams throughout the UK.

With an expanding project portfolio and an increase in the size and scale of jobs, the file sizes of the designs had simultaneously increased, placing greater pressure on the virtual private network (VPN) and increasing the upload and download times.

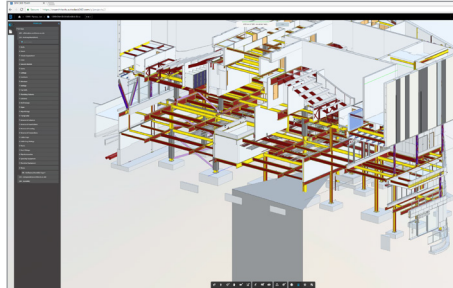
Without the ability to make updates to models in real-time, architects would have to take notes on the design at design team meetings and then return to the office to make edits. This wasn't an efficient approach as clients typically want to be able to interrogate a live model to test certain designs before making decisions, and instead they had to wait for a follow-up meeting or call to discuss the latest revisions.

Corstorphine + Wright required a solution that could enable the design team to make digital mark-ups anywhere, at any time and on any device so they can make live updates to models.

With cloud-based Autodesk BIM 360 Design, leading architecture practice Corstorphine + Wright has the flexibility to attract, recruit and work with the best talent, no matter their location.

The volume of design models meant that a lot of local storage was also required to store each project. This was proving to be costly and came with data protection issues such as access control and disaster recovery. The Practice needed a secure cloud solution that would enable colleagues and clients to collaborate anywhere in the country in real-time. BIM 360 is designed with privacy in mind. All files uploaded to BIM 360 are stored in the cloud on encrypted storage.

Image courtesy of Corstorphine + Wright

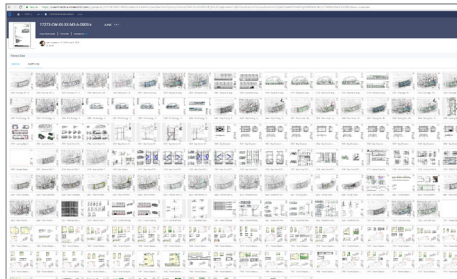


Using BIM360 Design to coordinate structural and architectural works on a complex cinema project

Combatting dead time

During 2017, Corstorphine + Wright started investigating cloud-based solutions that could support better collaboration between its design teams. After trialling a few different solutions, the practice found that the costs were either too high, or the system was not fully compatible with their

Image courtesy of Corstorphine + Wright



By using the online tool, or mobile app, we are quickly able to review and comment on models and documents digitally

IT infrastructure. However, after working with a client who requested a design process in Autodesk BIM 360, Corstorphine + Wright started using BIM 360 Design to co-author and share its designs which were primarily made with Autodesk® Revit®.

Using BIM 360 Design, Corstorphine + Wright was able to co-author shared Revit models as well as curate, coordinate and manage deliverables throughout the project lifecycle. Working on cloud-connected Revit models enabled not only the architects, but the wider project team and client to review design development in real-time from a browser, tablet or mobile device at any time.

Design information can now be published to shared folders enabling both design leads and clients to track project activity, file version history and issues management in real-time. There are no longer delays when making design updates, and design leads can control work sharing and deliverables

with the assurance that the right information is in the right hands throughout the project.

Aaron Gill, Architectural Technician said: "BIM 360 Design has allowed me to improve collaboration with colleagues regardless of where they are based in the country, without the need for time-consuming file transfers. Project leads can view and comment on drawings on the move, enabling us to work remotely with each other seamlessly. Being able to present 3D geometry in meetings using web-browsers has proved invaluable in design team meetings."

Increased productivity

Centralising project information to one on-line workspace in BIM 360 Design has helped teams, regardless of their location to always stay connected and has boosted productivity by 25%. The time savings for model syncing are even more impressive: models can now be uploaded and synced in under a minute, dramatically reducing dead time.

Anthony Woodsford, Associate & BIM Manager explained: "Using BIM 360 Design has increased our Revit and associated BIM productivity immensely. We are seeing productivity increases of up to 25% on cloud-based projects due to load and syncing times alone. Our employees are based all over the country but using BIM 360 Design gives us the certainty that our teams and clients are always aware of the latest versions and project developments. BIM 360 Design also gives us the flexibility to recruit the best talent regardless of location.

Corstorphine + Wright has also been able to make cost savings by drastically reducing its local storage requirements. BIM 360 Design enables them to store unlimited 3D Revit

"Our employees are based all over the country. BIM 360 Design gives us the **flexibility to recruit the best talent** regardless of location."

– **Anthony Woodsford**
Associate / BIM Manager
Corstorphine + Wright

models, 2D CAD sheets, and other designs in a common project repository in the cloud, reducing the risk of loss and improving data protection.

Matt Burnell, Associate Director at Corstorphine + Wright, said: "Using BIM 360 Design we have reduced the need for physical on-site storage in each of our offices, which in turn means more manageable data backup across the practice and improved data protection by reducing the risk of loss through fire, theft or hardware failure. The cloud setup also enables our teams to collaborate even more effectively, improving our work flows."

Looking to the future, Corstorphine + Wright intends to expand its use of BIM 360 products. "As a Project Director, BIM 360 Design saves me a considerable amount of time. Rather than having multiple calls and lots of back and forth via email, I can now use the viewer and mark-up facility which enables me to track progress on projects across multiple offices and comment on details. I am keen to use this functionality on all Revit-based projects going forward," said Mike Turner.

The practice has already benefited considerably from its innovative technological investment, and has now started to look into how it can integrate Virtual Reality into its design process. Looking to the future, Corstorphine + Wright is also investigating technologies such as 3D Printing and Augmented Reality to view digital models anywhere in any environment.